

Client: **Evo Labs**

Sample received: **05/01/25**

Analysis conducted: **05/07/25**

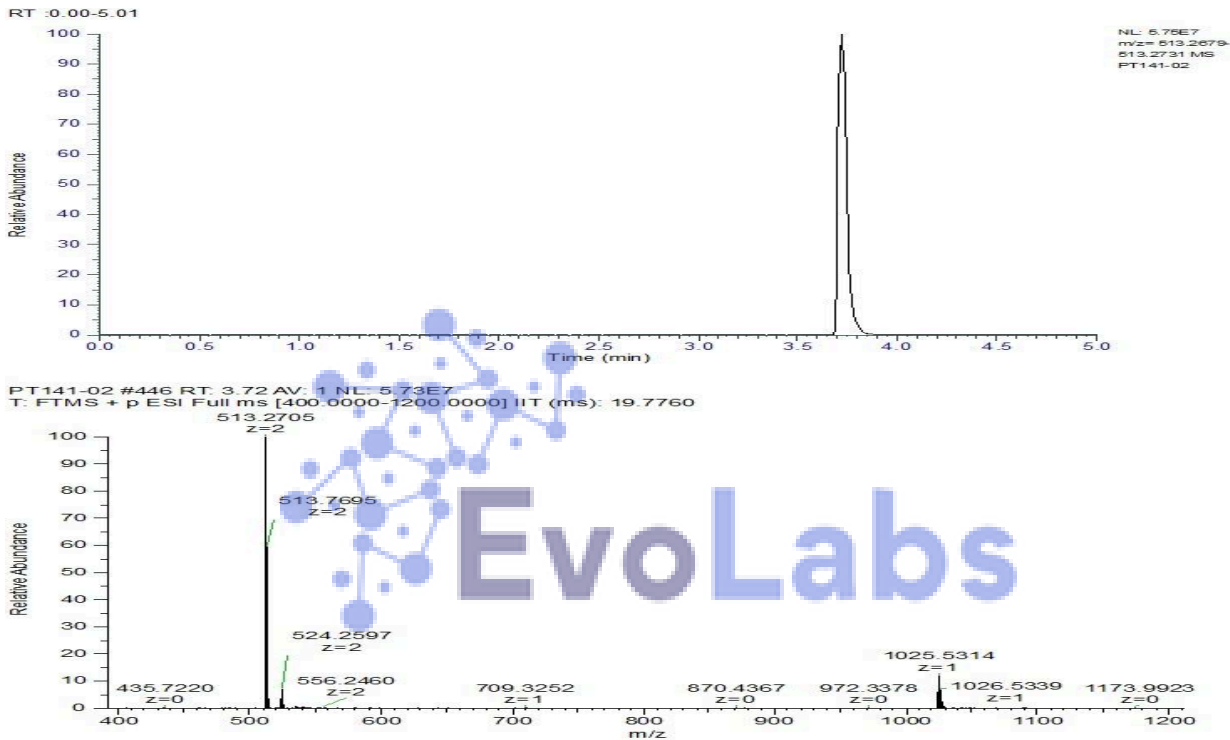
Compound:	PT-141	CAS:	189691-06-3
Batch/Lot #:	262702	Formula:	C50H68N14O10
Appearance:	Lyophilized white powder	Mol Wt:	1025.2 g/mol

Method: Qualitative and Quantitative chemical analysis by LC-MS with UV detection

Pubchem CID: 9941379

[PT-141](#) | [C50H68N14O10](#) | [CID 9941379- PubChem](#)

	Specification	Result	
Identity Test:	PT-141	PT-141	Conforms
Quantity:	10 mg	11.7 mg	+17%
Purity:	>98%	99.53%	Conforms



Analysis Performed by
Dr. Roberto Marin
Analytical Chemist
contact@bioregen.com

COA #10282
Security Key **EVOLABS**
bioregen.com/verify



Roberto Marin