

**Client: Evo Labs**

Sample received: **07/28/25**  
Analysis conducted: **08/04/25**

<b>Compound:</b>	Retatrutide	<b>CAS:</b>	2381089-83-2
<b>Batch/Lot #:</b>	262702	<b>Formula:</b>	C221H342N46O68
<b>Appearance:</b>	White lyophilized powder	<b>Mol Wt:</b>	4845.444 g/mol

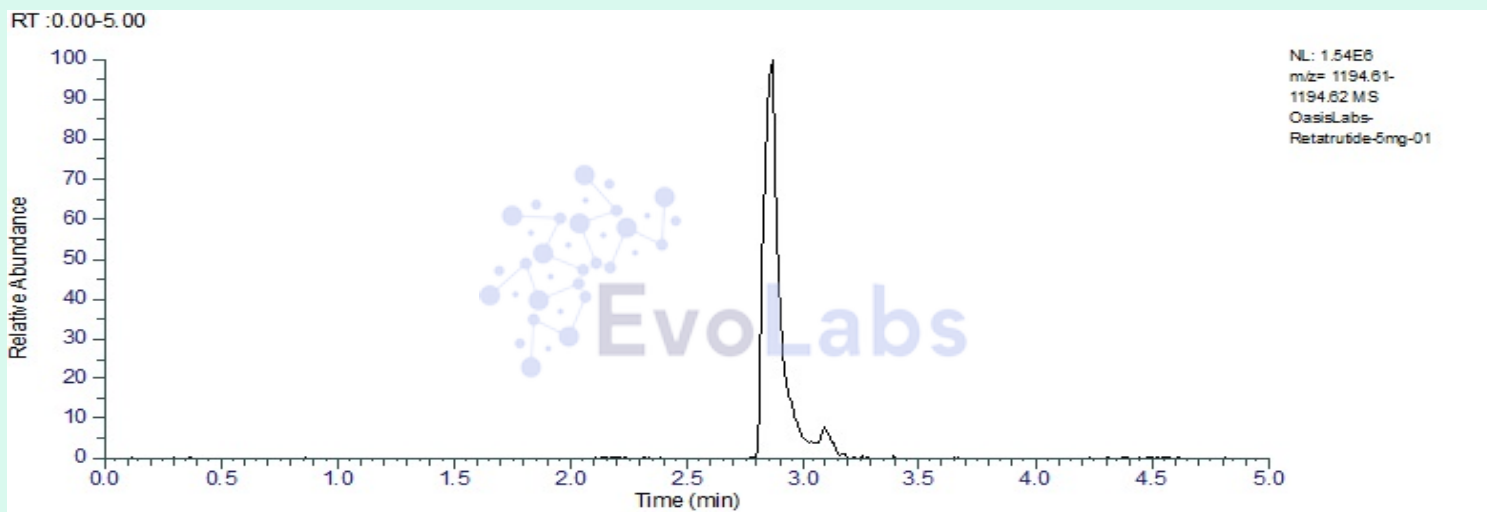
**Method:** Qualitative and Quantitative chemical analysis by Ultra High Performance Liquid Chromatography with Mass Spectrometry

**Pubchem CID:** 171390338

Retatrutide | C221H342N46O68 | Pubchem CID 171390338

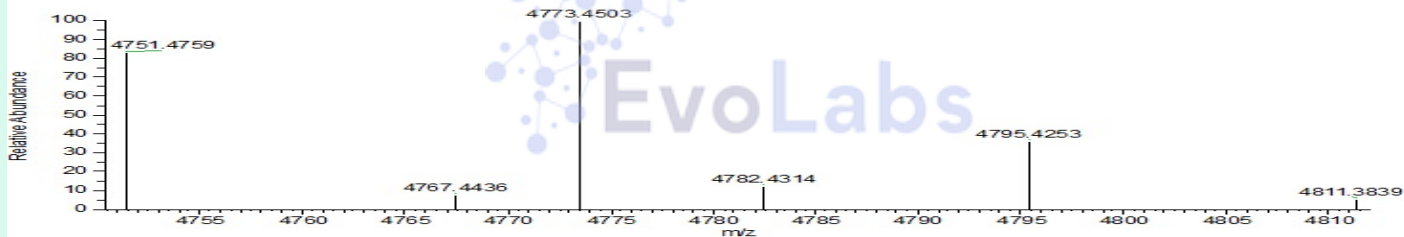
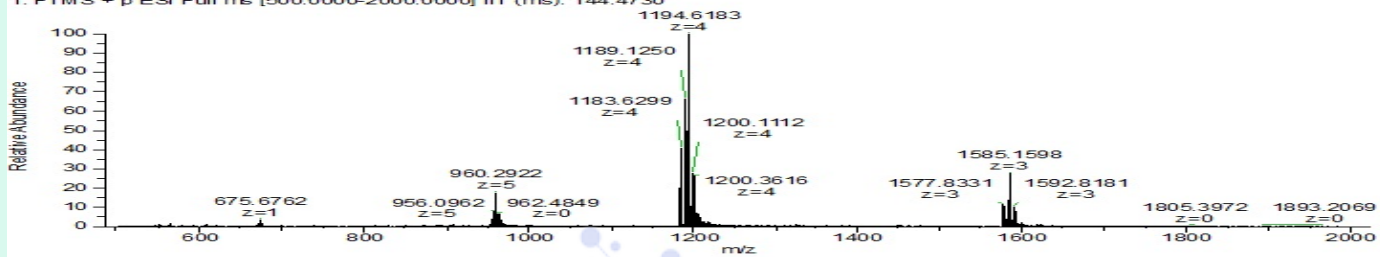
	Specification	Result	
<b>Identity Test:</b>	Retatrutide	<b>Retatrutide</b>	<b>Conforms</b>
<b>Quantity:</b>	5 mg ± 15%	5.9 mg	<b>Conforms</b>
<b>Purity:</b>	>98%	<b>98.93%</b>	<b>Conforms</b>

**LC-MS Chromatogram: Retention Time and Peak Analysis**



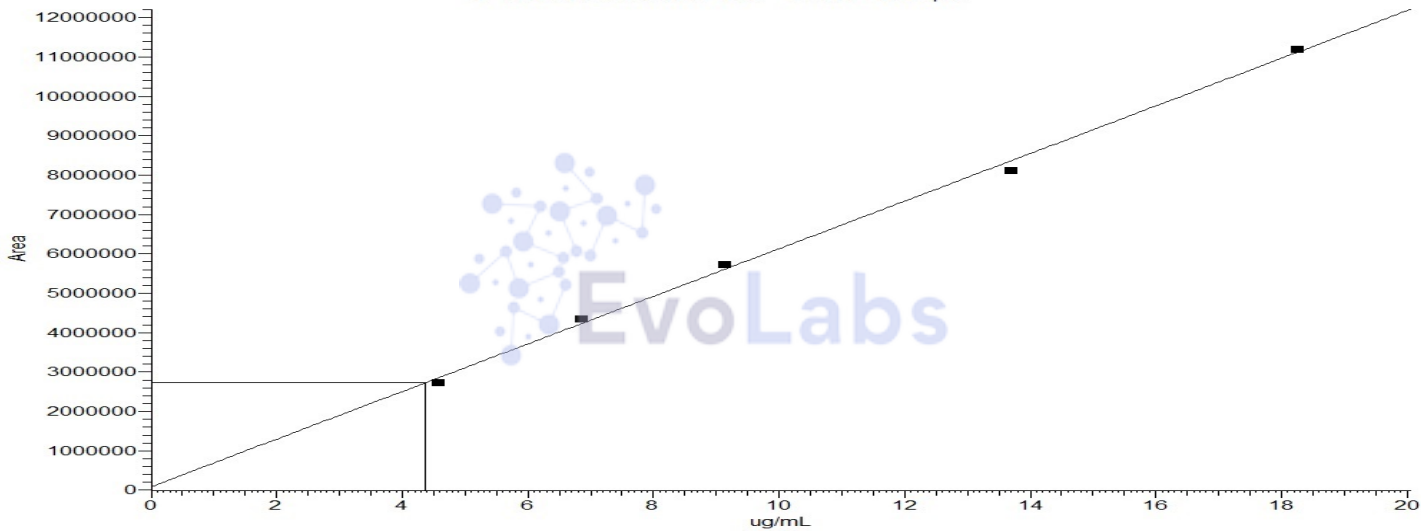
# Full Scan Mass Spectrometry Analysis

OasisLabs-Retatrutide-5mg-01 #328 RT: 2.86 AV: 1 NL: 1.43E6  
T: FTMS + p ESI Full ms [500,0000-2000,0000] IIT (ms): 144.4730



## Calibration Curve

Retatrutide  
Y = 87204.7+604267\*X R<sup>2</sup> = 0.9975 W: Equal



### Analysis Performed by

Dr. Roberto Marin  
Analytical Chemist  
contact@bioregen.com

COA #10766  
Security Key **EVOLABS**  
bioregen.com/verify

*Roberto Marin*

