

Client: **Evo Labs**

Sample received: **07/28/25**
Analysis conducted: **08/04/25**

Compound:	Retatrutide	CAS:	2381089-83-2
Batch/Lot #:	262702	Formula:	C221H342N46O68
Appearance:	White lyophilized powder	Mol Wt:	4845.444 g/mol

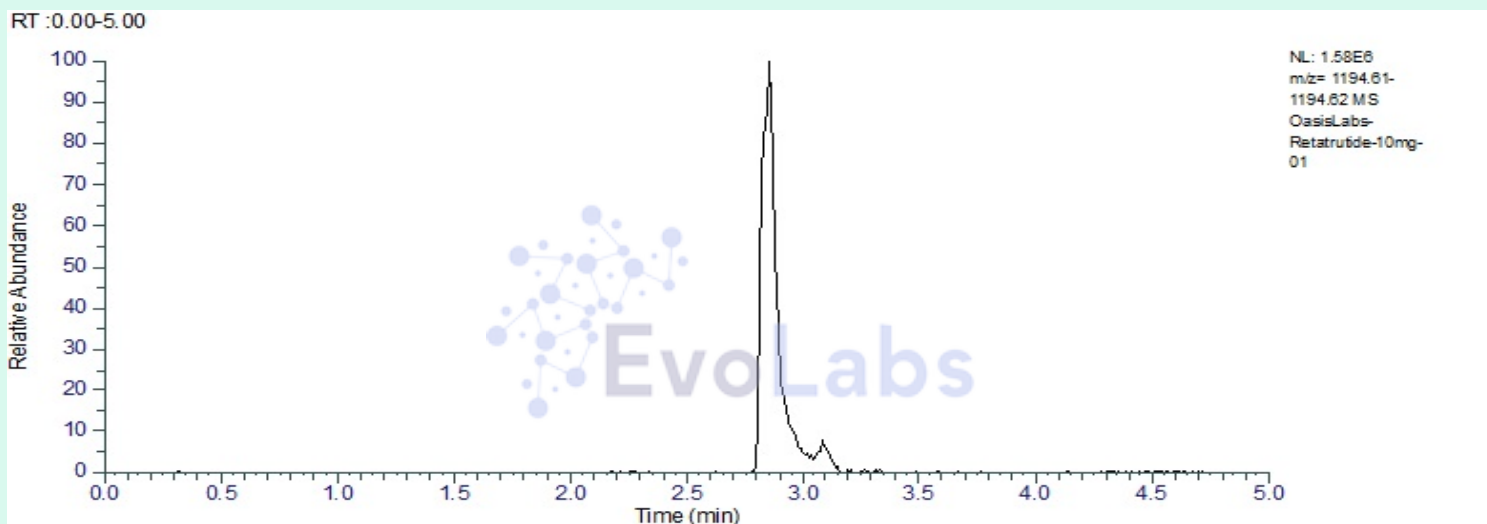
Method: Qualitative and Quantitative chemical analysis by Ultra High Performance Liquid Chromatography with Mass Spectrometry

Pubchem CID: 171390338

Retatrutide | C221H342N46O68 | Pubchem CID 171390338

	Specification	Result	
Identity Test:	Retatrutide	Retatrutide	Conforms
Quantity:	10 mg ± 15%	11.70 mg	Conforms
Purity:	>98%	99.28%	Conforms

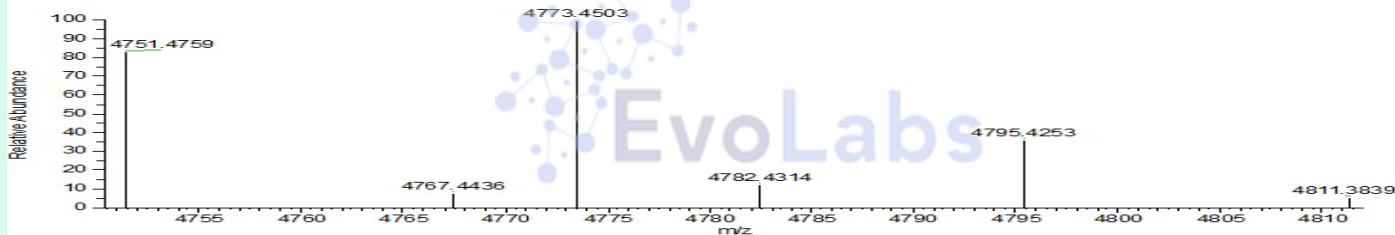
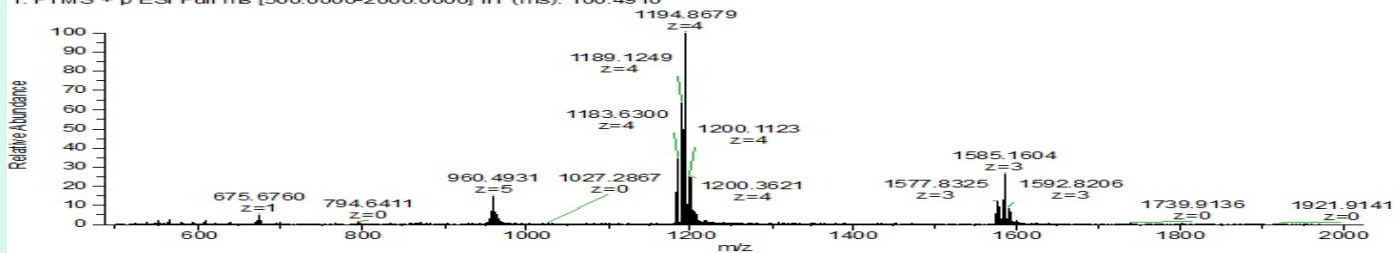
LC-MS Chromatogram: Retention Time and Peak Analysis



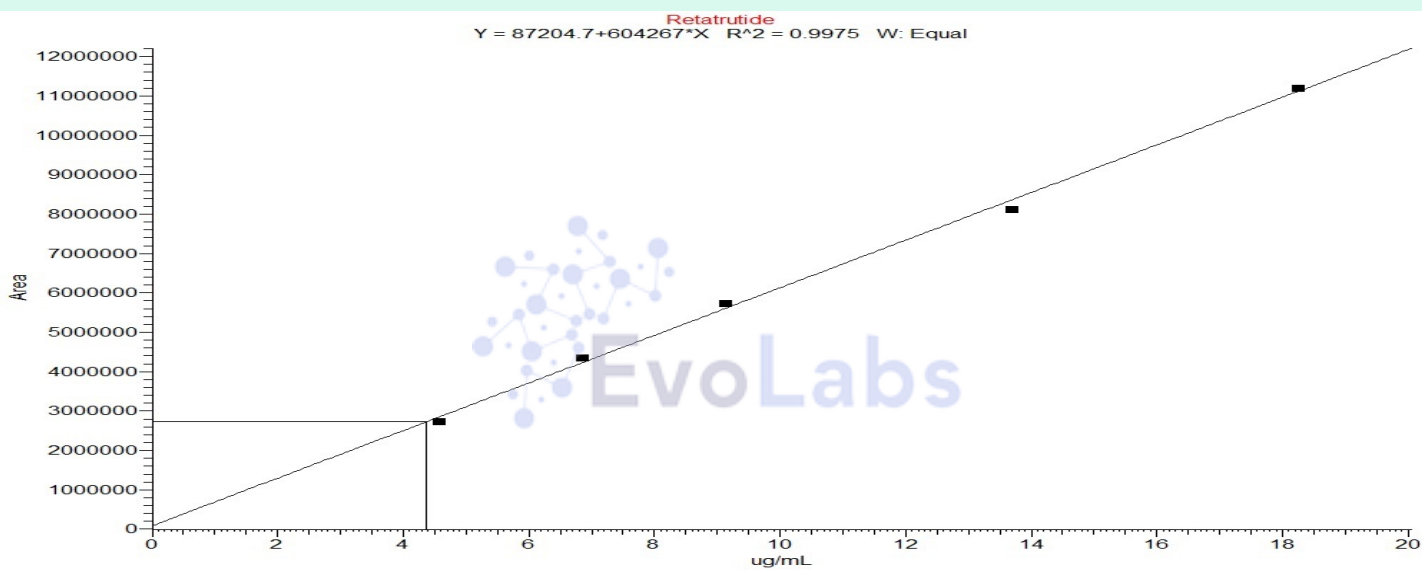
Full Scan Mass Spectrometry Analysis

OasisLabs-Retatrutide-10mg-01 #928 RT: 2.86 AV: 1 NL: 1.44E6

T: FTMS + p ESI Full ms [500.0000-2000.0000] IIT (ms): 100.4910



Calibration Curve



Analysis Performed by

Dr. Roberto Marin
Analytical Chemist
contact@bioregen.com

COA #10767
Security Key **EVOLABS**
bioregen.com/verify

Roberto Marin

