

Client: **Evo Labs**

Sample received: **11/07/25**  
Analysis conducted: **11/19/25**

Compound:	Retatrutide	CAS:	2381089-83-2
Batch/Lot #:	262702	Formula:	C221H342N46O68
Appearance:	White lyophilized powder	Mol Wt:	4845.444 g/mol

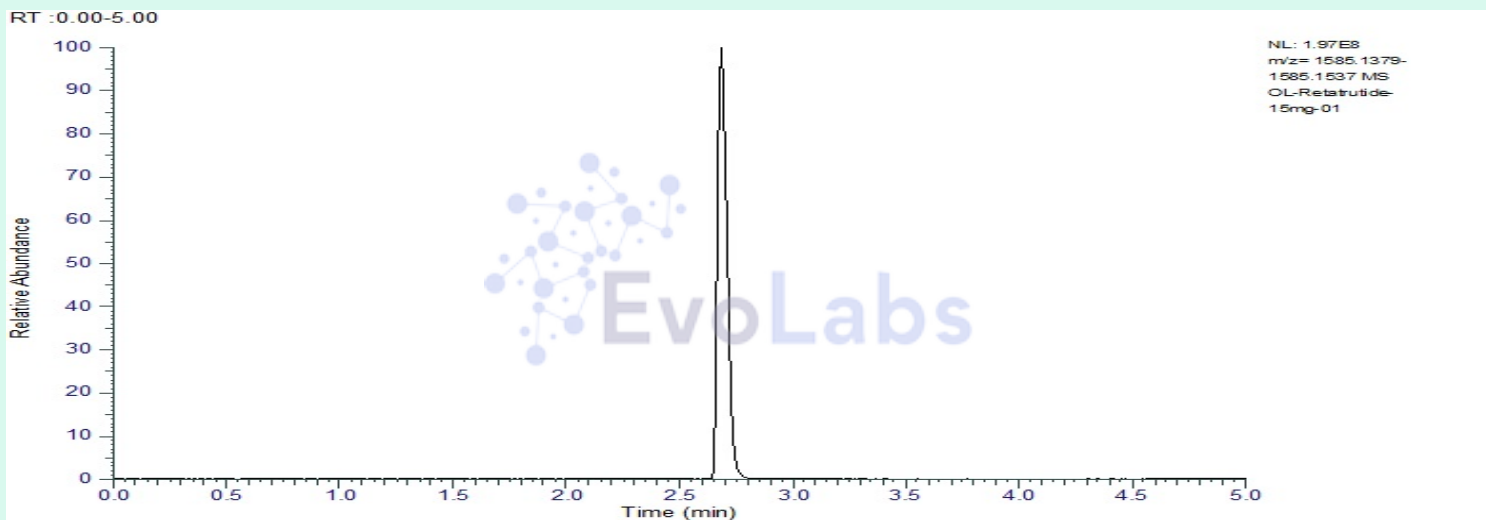
**Method:** Qualitative and Quantitative chemical analysis by Ultra High Performance Liquid Chromatography with Mass Spectrometry

**Pubchem CID:** 171390338

Retatrutide | C221H342N46O68 | Pubchem CID 171390338

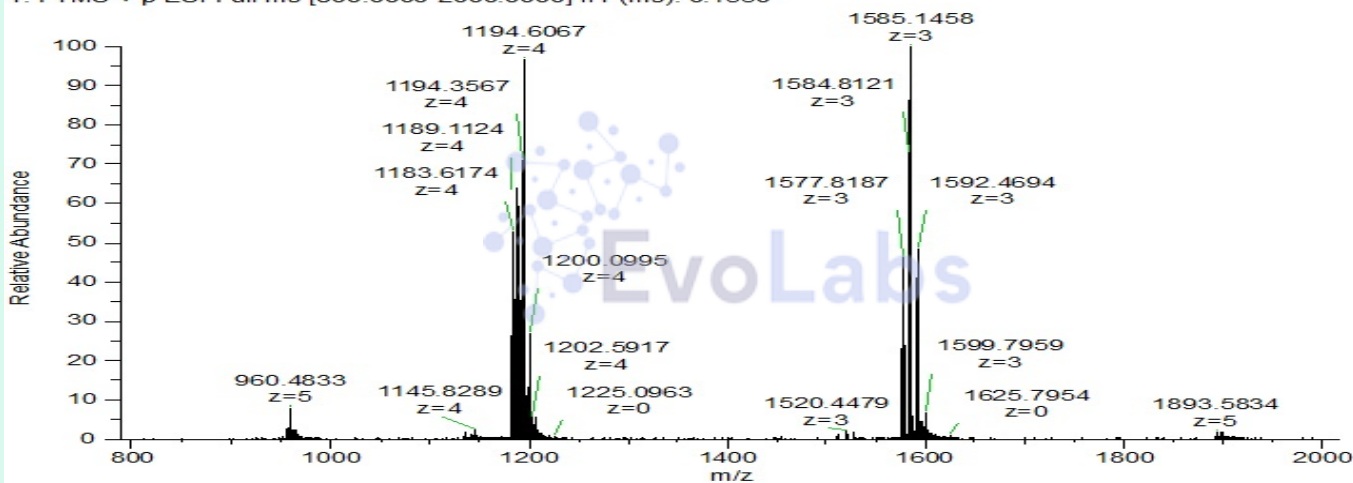
	Specification	Result	
Identity Test:	Retatrutide	<b>Retatrutide</b>	<b>Conforms</b>
Quantity:	15 mg ± 15%	15.72 mg	<b>Conforms</b>
Purity:	>99%	<b>99.90%</b>	<b>Conforms</b>

### LC-MS Chromatogram: Retention Time and Peak Analysis



# Full Scan Mass Spectrometry Analysis

OL-Retatrutide-15mg-01 #308 RT: 2.68 AV: 1 NL: 1.94E8  
T: FTMS + p ESI Full ms [800.0000-2000.0000] IIT (ms): 0.1530



## Analysis Performed by

Dr. Roberto Marin  
Analytical Chemist  
contact@bioregen.com

COA #11423  
Security Key **EVOLABS**  
bioregen.com/verify



*Roberto Marin*